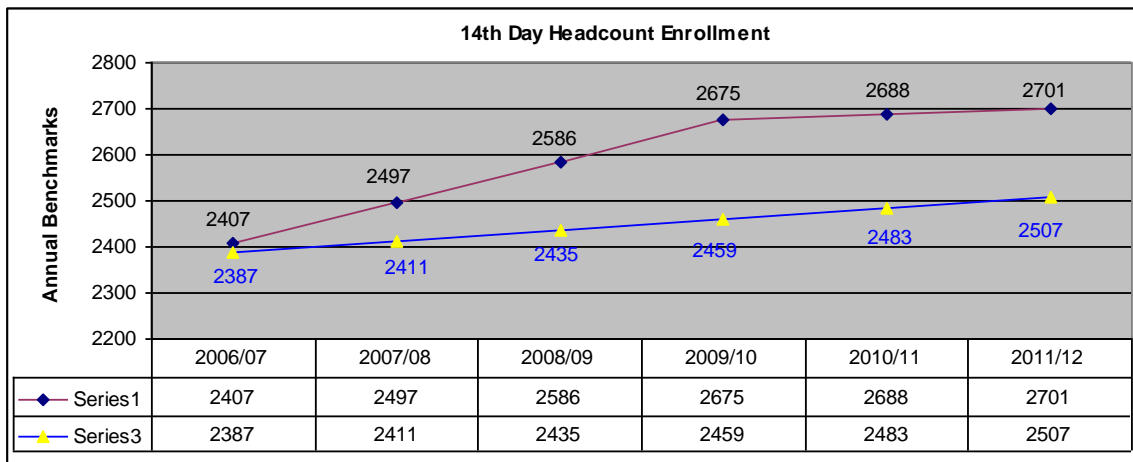


PERFORMANCE INDICATOR REVISIONS ACT 1465
 Southern University at Shreveport Louisiana (SUSLA)
 Strategic Plan (2006/07 - 2011/12)

STUDENT ACCESS-ENROLLMENT

Current Language: Increase Fall 14th class day headcount enrollment at Southern University at Shreveport by twenty (20) percent from the Fall, 2003 baseline level of 2230 to 2676 by Fall 2009.

Revised Language: Increase Fall 14th class day headcount enrollment at Southern University at Shreveport by five (5) percent from the Fall, 2006/07 baseline level of 2387 to 2507 by Fall 2011/12.



*Series (1) 2003/04 Benchmark
 Series (2) 2006/07 Revised Benchmark

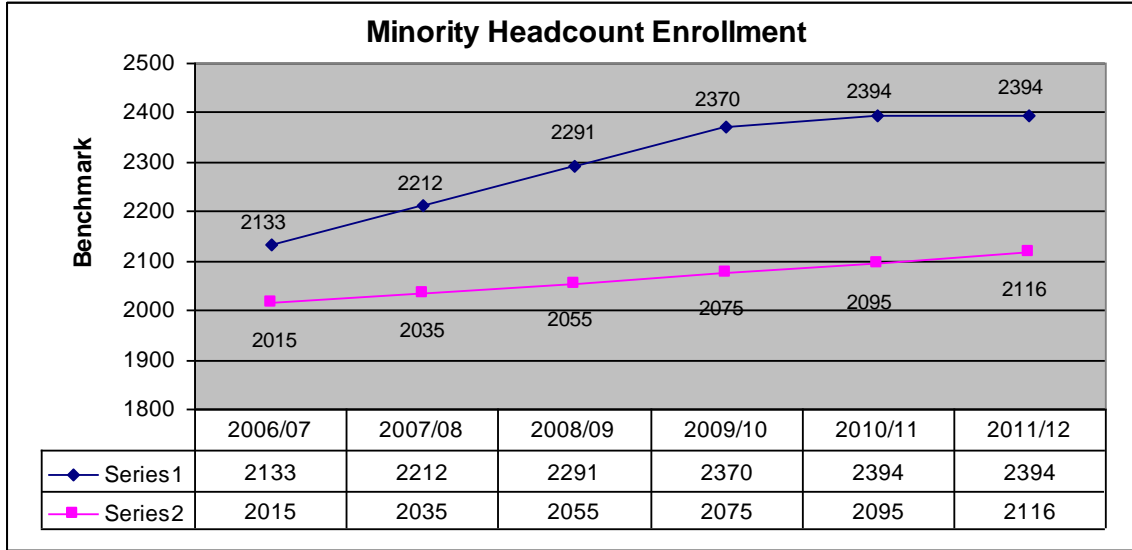
Assumptions

Since Academic Year 2000/01 SUSLA has witnessed a ninety-seven (97) percent increase in headcount enrollment. For the last (2) two academic years, AY '05/06 & 06/07 we have seen a six (6) percent decline in student headcount enrollment suggesting a possible leveling in population demographics. Changes in performance benchmarks represent adjustments for stabilization in statewide enrollment resulting from selective admissions and declining high school entry population. Office of Planning and Budget (OPB) has established assessment benchmarks at FY 2006/07 performance levels with a five (5) percent growth rate through FY 2011/12. SUSLA growth rate assume possible declines in our high school entry population. However, we expect that this decline will be offset by increases in the number of non-traditional student enrollees. Such increases are predicated on the number and quality of high demand academic programs which are labor market sensitive. Future strategic initiatives should focus on expanded recruitment opportunities, academic relevance, enhancement of articulation and dual enrollment agreements. Special attention must be given to achieving greater efficiency in our pre-registration and semester registration processes.

STUDENT ACCESS -ENROLLMENT

Current Language: Increase Fall 14th class day Minority headcount enrollment at Southern University at Shreveport by twenty (20) percent from the Fall, 2003 baseline level of 1975 to 2370 by Fall, 2009.

Revised Language: Increase Fall 14th class day Minority headcount enrollment at Southern University at Shreveport by five (5) percent from the fall, 2006/07 baseline level of 2015 to 2116 by Fall, 2011/12.



*Series (1) 2003/04 Benchmark
Series (2) 2006/07 Revised Benchmark

Assumptions

Since Academic Year 2000/01 SUSLA has witnessed an eight-four (84) percent increase in minority headcount enrollment. For the last (2) two academic years, AY '05/06 & 06/07 we have seen a six (6) percent decline in student headcount enrollment suggesting a possible leveling in population demographics. Changes in performance benchmarks represent adjustments for stabilization in statewide enrollment resulting from selective admissions and declining high school entry population.

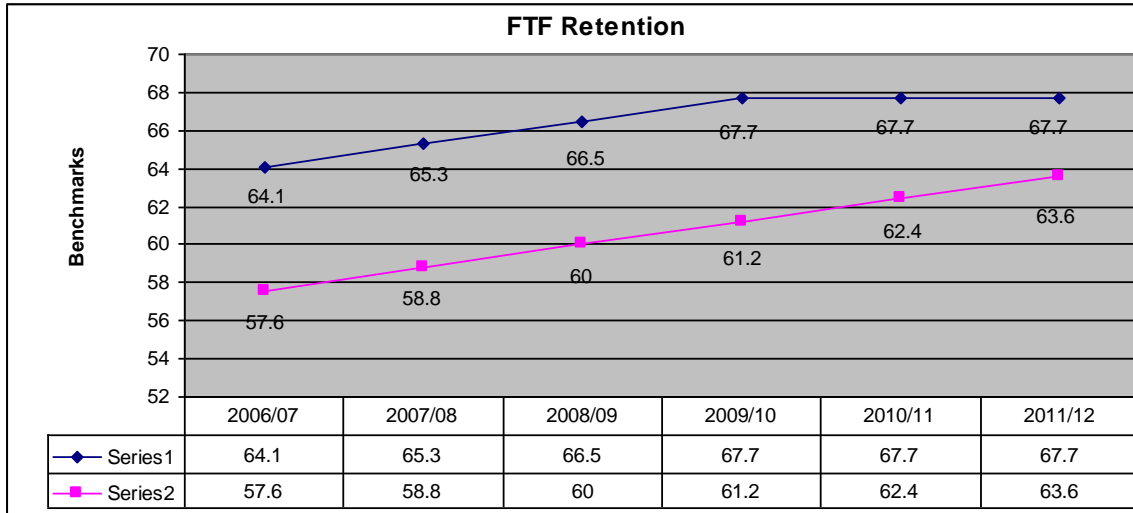
OPB has established assessment benchmarks at FY 2006/07 performance levels with a five (5) percent growth rate through FY 2011/12. SUSLA growth rate assume possible declines in our high school entry population. However, we expect that this decline will be offset by increases in the number of non-traditional student enrollees. Such increases are predicated on the number and quality of high demand academic programs which are labor market sensitive.

Future strategic initiatives should focus on pre-college bridging enrichment programs and academic enrichment programs with continuous expansion of opportunities for minority students. Special emphasis of proceeding should focus black males.

STUDENT SUCCESS – RETENTION

Current Language: Increase the percentage of first-time, full-time entering freshmen retained to the second year enrolled at Southern University at Shreveport by ten (10) percentage points over baseline retention rate of 229 (61.7%) in Fall, 2003 to 252 (71.7)% by Fall, 2009.

Revised Language: Increase the percentage of first-time, full-time entering freshmen retained to the second year enrolled at Southern University at Shreveport by ten (10) percent over the baseline retention rate of 57.6% in Fall, 2006/07 to 63.6% by Fall, 2011/12.



*Series (1) 2003/04 Benchmark
Series (2) 2006/07 Revised Benchmark

Assumptions

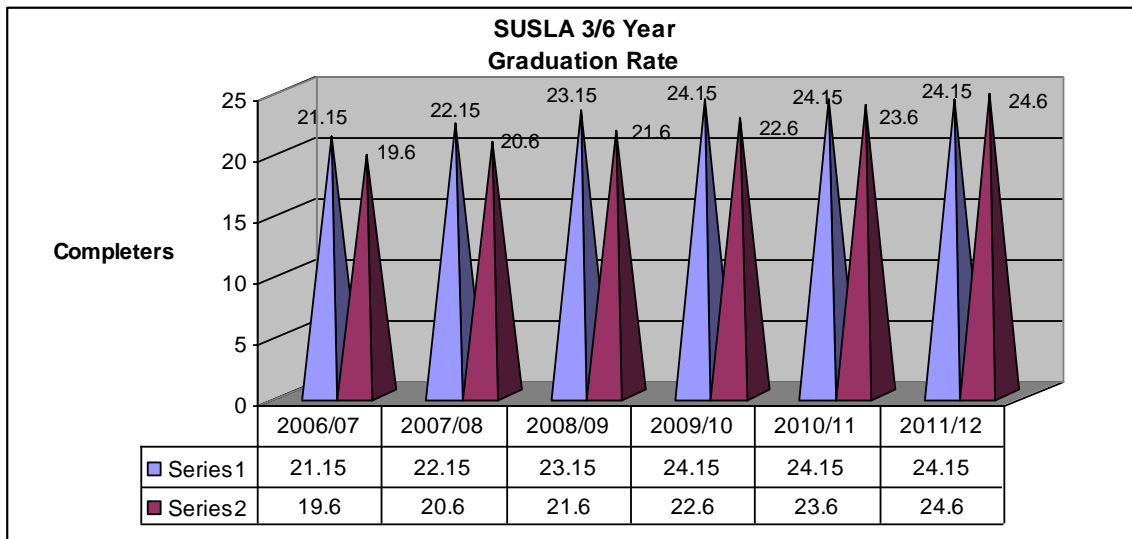
Since Academic Year 2000/01 SUSLA’s First Time Freshman retention rate has averaged approximately fifty-eight (58) percent. Changes in performance retention benchmarks represent adjustments for cited stabilization in statewide enrollment resulting from selective admissions and declining high school entry populations. OPB has established assessment benchmarks at the FY 2006/07 performance levels with a projected growth rate of five (5) percent in retention through FY 2011/12. For the next five (5) years PAR project our annual FTIF retention rate to average approximately sixty (60) percent. One question that the university community must determine - ***Is a sixty (60) percent annual retention rate an acceptable performance benchmark for our institution?***

For SUSLA, establishing an acceptable freshman retention rate is upon our ability to develop Peer Profiles with similar two (2) year public post secondary open enrollment institution, possessing market sensitive academic programs, a clientele based with socio-economic limitations and located in an underserved metropolitan area.

STUDENT SUCCESS -GRADUATION RATES

Current Language: Increase the three/six-year graduation rate at Southern University at Shreveport by five (5) percentage points from the 2002/03 academic year baseline level of nineteen point fifteen (19.15) percent to twenty-four point fifteen (24.15) percent by 2009-2010.

Revised Language: Increase the three/six-year graduation rate at Southern University at Shreveport by five (5) percentage points from the 2006/07 academic year baseline level of nineteen point six (19.6) percent to twenty-four point six (24.6) by 2011/12.



Series (1) 2003/04 Benchmark
Series (2) 2006/07 Revised Benchmark

Assumptions

Since Academic Year 2000/01 SUSLA’s First Time Freshman graduation rate has averaged approximately twenty-one (21) percent. OPB has established assessment benchmarks at the FY 2006/07 performance levels with a projected growth rate of five (5) percent in our three to six year graduation rate through FY 2011/12. The projected five (5) percent growth rate assumes positive gains in completion rates resulting from acquisition of student housing and implementation stronger, retention, academic matriculation policies and student support services initiatives during the next five (5) year planning cycle.

It must be noted that cited performance indicators reflect completers for associates and certificate level degrees. No first degree attainment indicators are established for First Time Freshmen (FTF) cohort who transfers into baccalaureate degree programs within the Tri State ARKLATX Region. During the five (5) year planning, SUSLA plan to track and report such performance through the 1465 Strategic Planning Reporting effort.

Justification for the preceding is as follow.

First Degree Attainment

SUSLA has witnessed a decline in the number of First Time Freshmen (FTF) cohorts transitioning in to four (4) year baccalaureate degree programs. In a recent analysis of statewide FTF completion rates for the time period commencing academic years 1998/99 through 2000/01, SUSLA's baccalaureate transfer completion rate averaged four (4) percent of the FTF entry cohort population. This finding is significantly lower than similar transfer rates listed for our two (2) year public postsecondary institutional state peer group.

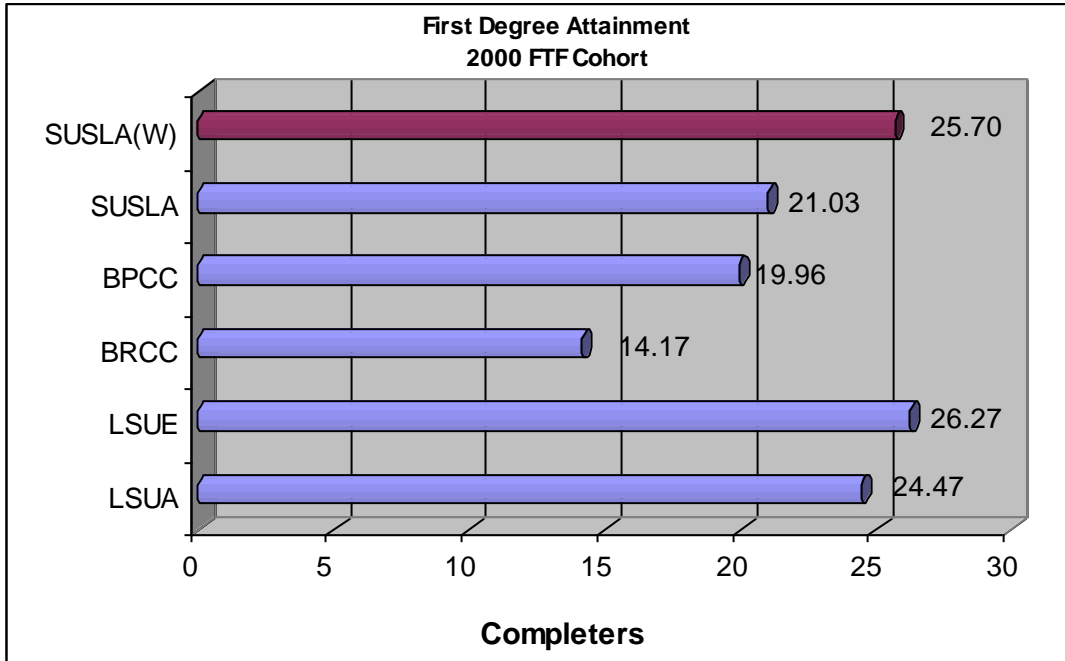
Although SUSLA's Associate degree completion rate remains highest within Louisiana postsecondary education, further matriculation activity into four (4) year post secondary institutions are the lowest in the state. Many reasons have been attributed to this phenomenon. For example, improved labor market opportunities and the "*home bound nature*" of our student base, which inhibits further matriculation activities beyond the Shreveport Metropolitan area, have been cited as contributing factors to declining performance.

While the proceeding may hold merit, we believe that our Regents' cohort graduation analysis is limited in scope. Specifically, the analysis is limited to Louisiana public post secondary institutions. No considerations are given to intrastate private institution transfer arrangements or commensurate agreements with accredited interstate educational enterprises in proximity to SUSLA. Such is the case regarding SUSLA's collaborative relationship with Wiley College.

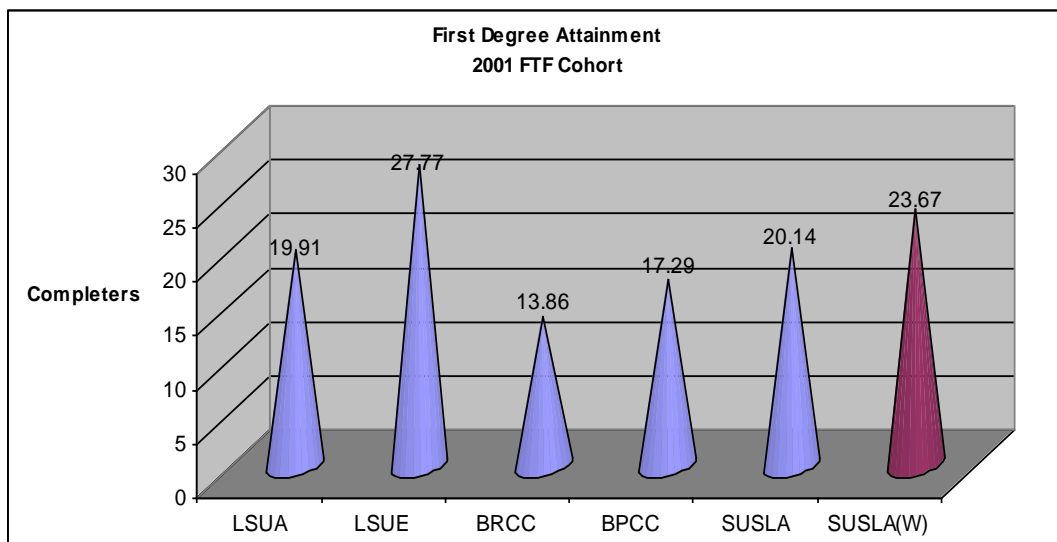
Wiley College is approximately thirty-five (35) miles from Southern University at Shreveport Louisiana. Wiley has provided baccalaureate degree program offerings through various remote site locations within the Shreveport Metropolitan area. It commensurate status as an HBCU institution and geographical proximity provides alternative post matriculation options to our students seeking further degree attainment beyond the certificate/associate levels.

We have presented this hypothesis to the Louisiana Board of Regents further suggesting that inclusion of transfer completers would significantly increase SUSLA's first degree attainment cohort graduation rate. For example, an increase of ten (10) baccalaureate transfer completers to the 2000 FTF cohort will affect the published graduation rate in excess of twenty (20) percent of the present listing. See the following analyses which depict the impact of the preceding on SUSLA's 2000 & 2001 FTF graduating cohorts.

We believe such increases would improve SUSLA's overall completion rates and further enhance our reputation as a top performing Community College. The Planning Assessment and Research Office has initiated dialogue with Wiley College and planned to track performance through SUSLA's Banner Management Information System, Statewide Student Profile Reporting System (SSPS), The National Student Clearinghouse Data Profile System and the Integrated Postsecondary Education Data System (IPEDS). Verified information will be noted through the Louisiana Performance Accountability Reporting System for completion rates and further reflected annual strategic operational planning processes.



SUSLA (W) Inclusion of SUSLA/Wiley College Transfer Completers



SUSLA (W) Inclusion of SUSLA/Wiley College Transfer Completers

Assumptions

Cited performance indicators reflect SUSLA FTF completers receiving Certificate, Associates and Baccalaureate degrees. SUSLA (W) reflects SUSLA/Wiley College transfers. Degree attainment must occur within one hundred twenty-five (125) percent or six (6) years after freshman entry date. Cited numbers reflect consideration for dual degrees. Information obtained from the Louisiana Statewide Student Profile and revised to reflect impact Wiley College transfers on first degree performance rates.